

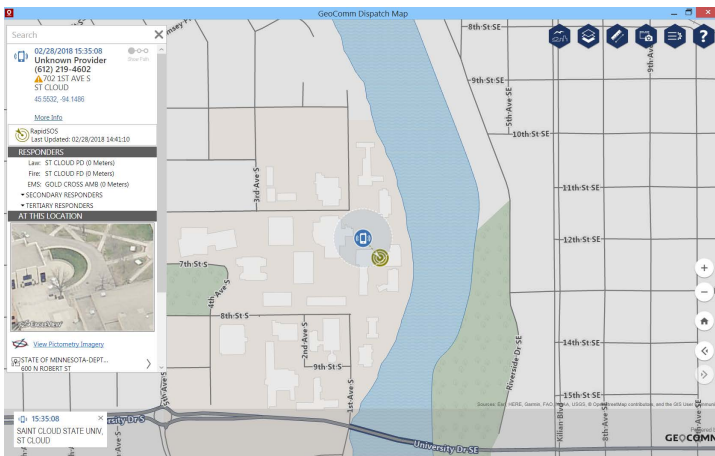
Features	Use Purpose	Basic	Standard
Supports custom local GIS map data	Utilize your own GIS data stored on your local 9-1-1 workstations; administrators are also able to easily manage updates keeping the maps current and accurate.	✓	✓
Supports ArcGIS Online free maps and search	Provides supplemental information about the surrounding jurisdictions through freely-available maps and searches.	✓	✓
Wireless, landline, VoIP, telematics, and text/SMS 9-1-1 call plotting	Automatically displays 9-1-1 call locations helping users save time by quickly determining the caller's location.	✓	✓
Saved places	Create predefined bookmarks of a map view.	✓	✓
Enhanced caller location via RapidSOS NG911 Clearinghouse	View supplemental 9-1-1 location information (when the wireless phone location is available via the RapidSOS NG911 Clearinghouse) resulting in improved indoor location accuracy and enabling faster and more reliable emergency response.	✓	✓
All-in-one search	Ability to quickly find locations using address, street, coordinate, map data searches via key words.	✓	✓
Location details/nearby proximity search	Automatically presents key information about the location via additional map layers.	✓	✓
CAD integration	Allows a CAD system to maintain active incidents on the map and makes plotting and zooming to incidents or locations on the map possible on a specific workstation or console.		✓
Pictometry	Supports local files or cloud-hosted viewing of high-resolution imagery depicting buildings and locations from every angle; this produces a 3D-like effect helping users accurately describe locations to responders.		✓
Markups	Eliminates the need for other users to remake and duplicate work through shared markups.		✓
Indoor floor aware display	Provides more context about 9-1-1 caller location through viewable indoor floor plan layers.		✓
Local aerial imagery	View locally-stored, high-resolution aerial imagery of current images and area details.		✓

GeoComm Dispatch Map

Powered by Esri Technology and designed to meet stringent and demanding requirements of mission critical emergency response GIS.

GeoComm Dispatch Map brings mapping and geographic information system (GIS) data together to provide your agency a more accurate and faster emergency response. GeoComm Dispatch Map offers public safety entities an innovative 9-1-1 dispatch mapping solution that is reliable, intuitive, cost-effective, and easy to implement.

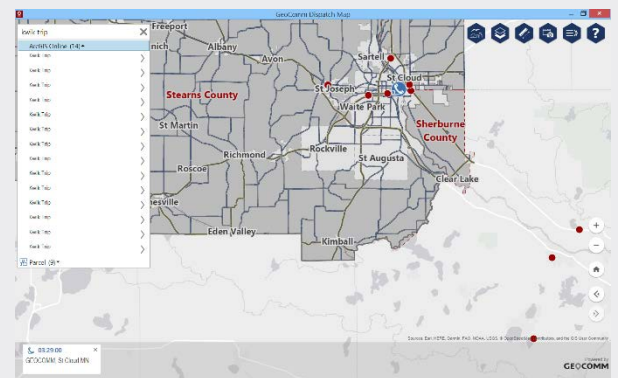
Provides a 9-1-1 dispatch mapping solution with exceptional user experience.



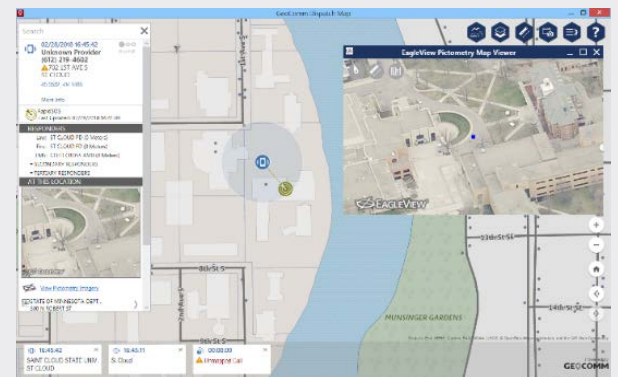
Benefits

- Offers quick access to location information through searches and map tools minimizing clicks and reducing response time
- Improves indoor location accuracy for faster and more reliable emergency response by retrieving mobile phone 9-1-1 caller location via the RapidSOS NG911 Clearinghouse
- Provides greater situational awareness and increased overall efficient and effective emergency response through new mapping capabilities such as ArcGIS online maps
- Displays wireless and wireline 9-1-1 call locations helping users save time by quickly determining where callers are located
- Able to work with E9-1-1 or NG9-1-1 systems
- Meets your 9-1-1 dispatch needs and requirements; Available in two different packages

Provides supplemental information through ArcGIS Online free map and search



Utilize Pictometry to accurately describe locations to responders



Improve indoor location accuracy with supplemental 9-1-1 caller location information via RapidSOS

