



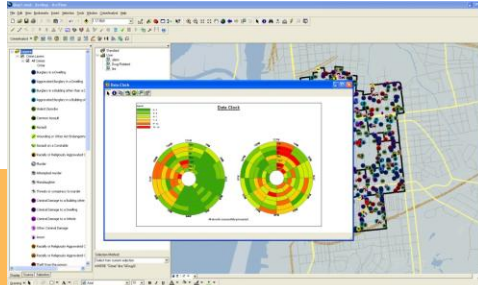
GeoLynx[™] CrimeAnalyst

GIS CRIME INTELLIGENCE EXTENSION

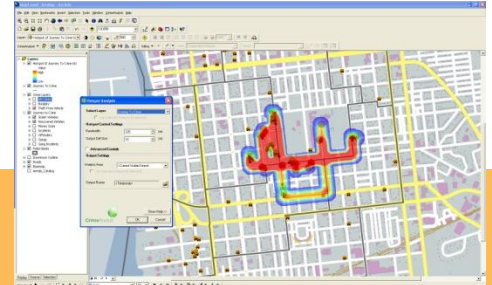
Hotspot mapping



Data clock



Journey to crime linear hotspot



GIS Crime Intelligence Extension

GeoLynx CrimeAnalyst enables you to analyze, forecast, and intervene in a crime series. GeoLynx CrimeAnalyst provides you with the tools needed to geographically define criminal activities in order to detect patterns, trends, and, ultimately, to make intelligent policing decisions based on actionable data.

With GeoLynx CrimeAnalyst you will be able to analyze cases from your CAD and RMS based on location and time. GeoLynx CrimeAnalyst provides you with powerful insight into crime patterns in your community, enabling repetitive tasks to be stored and re-used saving valuable analyst time, and allowing police resources to be targeted more effectively. The time saved can be used to leverage GeoLynx CrimeAnalyst sophisticated capabilities including repeat crime analysis and visualization of potential routes between crimes.

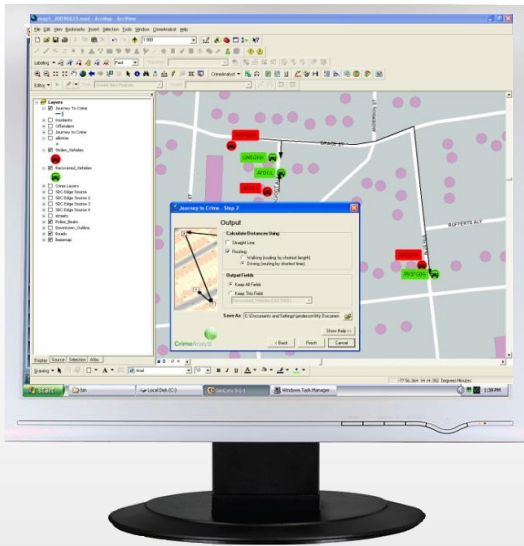


GeoLynx CrimeAnalyst, developed by ESRI (UK) out of the United Kingdom as an extension of ArcGIS, is already deployed into diverse forces in more than 15 countries including Netherlands, Canada, France, Australia, Switzerland, Saudi Arabia, Russia, United Kingdom, and South Africa.



Public Safety Consulting, GIS, and Software
www.geo-comm.com 888.436.2666
sales@geo-comm.com

GeoComm
 been there.



GeoLynx CrimeAnalyst is a must have tool. It can be easily incorporated into your standard operations to aid in creating geospatial knowledge and situational awareness from a wide variety of data sources – resulting in situational crime prevention and intervention in a crime series. GeoLynx CrimeAnalyst is an extension for ESRI ArcGIS Desktop 9.3.x that helps you to effectively analyze, forecast, and intervene in crime series.

Analyst Tools

- | | |
|-----------------------------|------------------------------|
| Hot spot mapping | Identifying repeat incidents |
| Address matching | Automating crime statistics |
| Linking time with space | Managing queries |
| Visualizing criminal routes | Comparing cases |

Benefits

- | | |
|--|---|
| Automates crime reporting and analysis | Provides geospatial knowledge tied to cases |
| Visualizes crime locations | Shows crime activity routes |
| Illustrates crime density areas | Identifies repeat incidents |
| Geocodes cases to the GIS | Compares and analyzes cases |
| Depicts patterns and trends | Creates situational awareness |
| Leverages enterprise GIS to prevent crimes | Generates intelligence deliverables |

Features

- | | |
|---|--|
| Uses CAD and RMS data | Next generation hot spot mapping, crime repetition, and comparative analysis |
| Address matching; a geocoding data function | Hard and soft copy reports, charts, and graphs |
| Manages, sorts, and queries data | Designed for speed and ease of use |
| Includes advanced spatial and time-based modeling tools | Open and interoperable solution for maximum flexibility |
| An extension of ESRI ArcGIS desktop | Complete product offering includes training, implementation, and consulting |
| Built using industry standard technology | |



Public Safety Consulting, GIS, and Software
www.geo-comm.com 888.436.2666
sales@geo-comm.com

GeoComm
 been there.